



HPS™ – HIGH PERFORMANCE STREET MOTOR OIL

ENGINE OILS

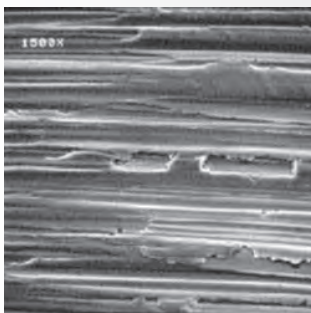
Royal Purple HPS Series motor oil is specifically formulated to maximize performance and meet the demands of high performance and modified engines. HPS is recommended for vehicles no longer under manufacturer warranty and for those seeking a higher level of performance and protection.

This unique blend enables HPS to outperform leading synthetics and conventional lubricants for both gasoline and diesel engines. Royal Purple's HPS is fortified with a high level of zinc/phosphorus anti-wear additive and Royal Purple's proprietary Synerlec® additive technology.

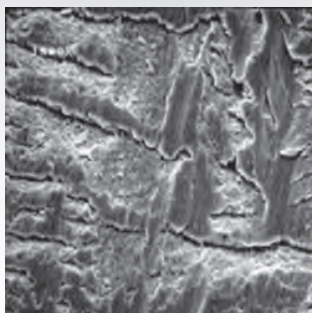
PERFORMANCE ADVANTAGES

- Exceptionally high film strength for dramatic reductions in engine wear and reduced engine heat to extend the life of your engine
- Improved sealing between the piston ring and cylinder wall maximizes horsepower and torque and optimizes fuel economy
- Exceptional oxidation stability extends oil life and allows for more miles driven between oil changes saving you time, money and reducing the impact on the environment
- Advanced synthetic solvency reduces engine deposits and keeps engines clean
- Protects valve trains using roller or flat tappet lifters that require added protection due to high lift/ high ramp rate camshafts
- Provides superior corrosion protection

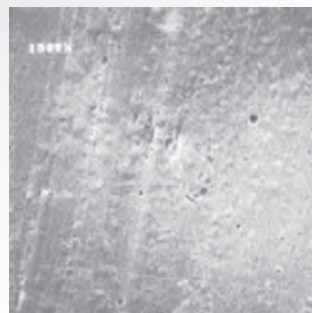
BEARING COMPARISON



A new bearing surface appears smooth until magnified 1500X.



The bearing is scuffed after using a leading synthetic motor oil.



The bearing is visibly smoother after using Royal Purple HPS.

the performance oil that outperforms®



HPS is available in the following viscosities: 5W-20, 5W-30, 10W-30, 10W-40 and 20W-50.

PART NUMBERS

5W-20	
5-Gal. Pail	35520
12-Qt. Case	32520
1-Qt. Bottle*	31520

5W-30	
5-Gal. Pail	35530
12-Qt. Case	32530
1-Qt. Bottle*	31530

10W-30	
5-Gal. Pail	35130
12-Qt. Case	32130
1-Qt. Bottle*	31130

10W-40	
5-Gal. Pail	35140
12-Qt. Case	32140
1-Qt. Bottle*	31140

20W-50	
5-Gal. Pail	35250
12-Qt. Case	32250
1-Qt. Bottle*	31250

***AVAILABLE IN CASES ONLY**

ENGINE OILS